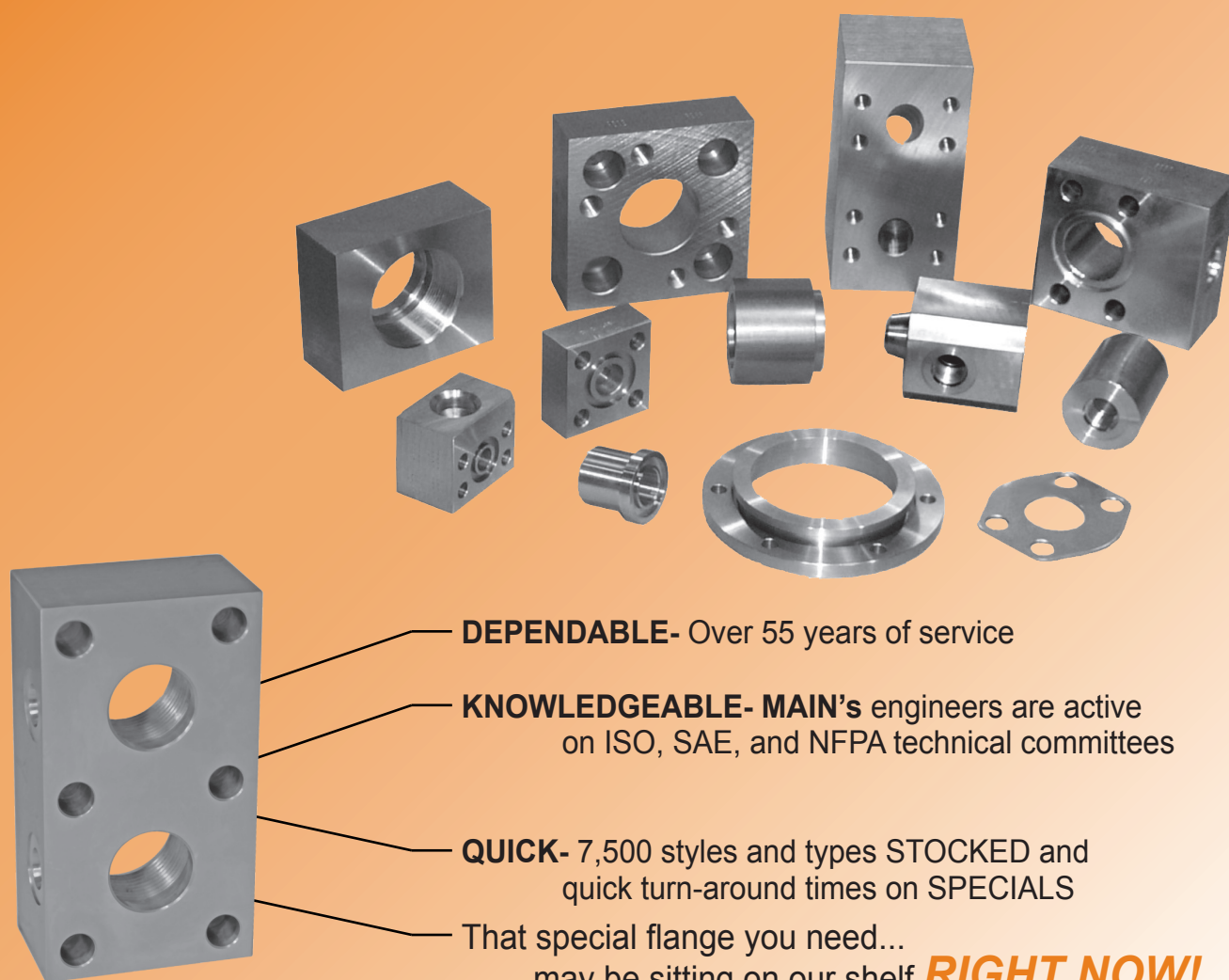




CATALOG 66
ON-LINE VERSION

Quick Reference to *SPECIAL FLANGES*



DEPENDABLE- Over 55 years of service

KNOWLEDGEABLE- MAIN's engineers are active on ISO, SAE, and NFPA technical committees

QUICK- 7,500 styles and types STOCKED and quick turn-around times on SPECIALS

That special flange you need...
may be sitting on our shelf ***RIGHT NOW!***

MAIN MANUFACTURING PRODUCTS
3181 TRI-PARK DRIVE
GRAND BLANC, MICHIGAN 48439

www.MAINmfg.com
info@MAINmfg.com

TOLL FREE PHONE: 800-521-7918
MICHIGAN PHONE: 810-953-1380
FAX: 810-953-1385



Developers & Manufacturers of
Hydraulic Flanges and Components

Quick Reference Guide

Purpose

It is impractical to catalog each of the over 7,500 different flanges we stock, let alone the tens of thousands produced, over 55 years by **MAIN MANUFACTURING PRODUCTS, INC.** **MAIN's** expertise extends beyond standard flanges to special flanges as well. This "*Quick Reference Guide*" was created to assist in describing these configurations.

How to Use

Your "special" part is often in stock at **MAIN**. Using the frame numbers in this brochure helps direct the conversation and aids in communication.

1. Review the frames and choose the one that best matches your design.
2. Decide on the parameters in the frame and other notes.
3. Call **800-521-7918** to talk to one of our experienced engineers or send an e-mail to **info@MAINmfg.com**.
4. DONE!

On the Web

MAIN's "FIND A PART" tool connects the dots from picture → filters by size and description → part number. Using the "FIND A PART" tool gets you from concept to the part number and catalog page quickly. Go to **MAINmfg.com** and select the "FIND A PART" tool.

Our "**CREATE-A-FLANGE**" tool is a great place to go to sketch your designs and send them to **MAIN**. Simply go to **MAINmfg.com** and click on the "CREATE-A-FLANGE" tool. It has interactive sketches of popular specials and helps to avoid the "missing one dimension" problem. Fill it out and submit it to **MAIN** for pricing and delivery.

Materials

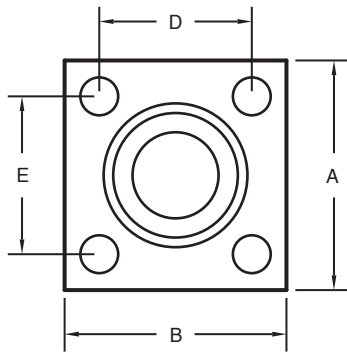
MAIN produces and stocks flanges in many materials including: Carbon Steel, 304L, and 316L Stainless, Aluminum, Hastaloy, Inconel, Monel, and Cupro-Nickel. We can quote parts in any commercially available material.

Interactive versions of this brochure & dimensional drawings are available at **MAINmfg.com**.

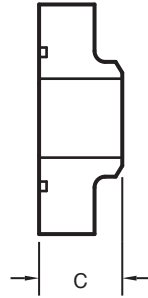
Dimensional drawings are available from our **MAIN** Catalog.

Call **800-521-7918**, fax **810-953-1385** or e-mail to **info@MAINmfg.com**.

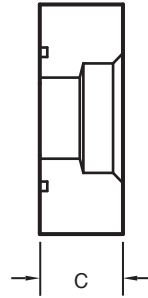
SAE & SQUARE IN-LINE FLANGES



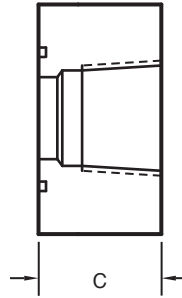
AVAILABLE IN BOTH
O-RING & FLAT FACED



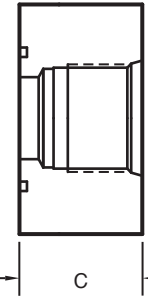
BUTT WELD
66-1A



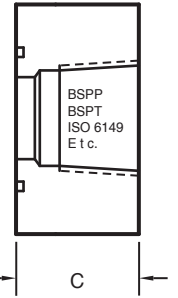
SOCKET WELD
66-1B



N P T F
66-1C

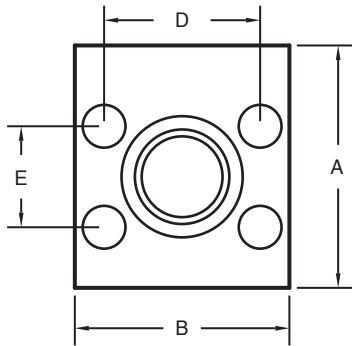


SAE O-RING BOSS
66-1D

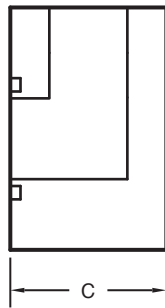


OTHER
66-1E

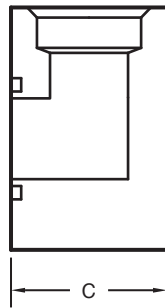
SAE & SQUARE ELBOW FLANGES



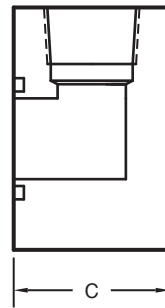
AVAILABLE IN BOTH
O-RING & FLAT FACED



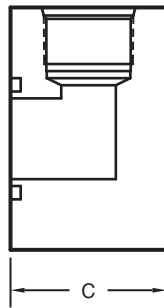
FLANGED
66-2A



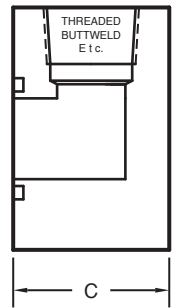
SOCKET WELD
66-2B



N P T F
66-2C

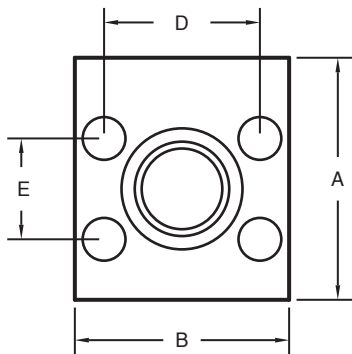


SAE O-RING BOSS
66-2D

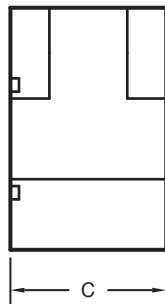


OTHER
66-2E

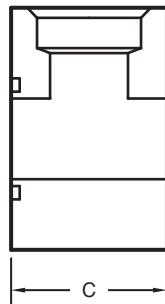
SAE & SQUARE RUN TEE FLANGES



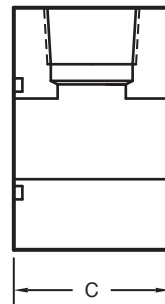
AVAILABLE IN BOTH
O-RING & FLAT FACED



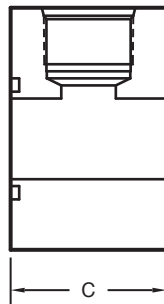
FLANGED
66-3A



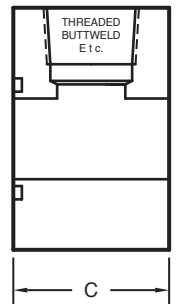
SOCKET WELD
66-3B



N P T F
66-3C

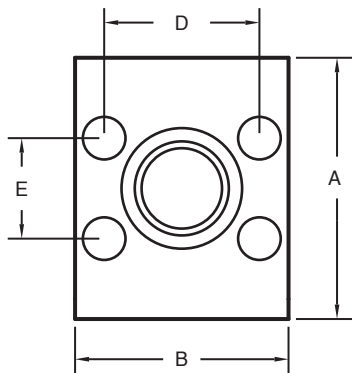


SAE O-RING BOSS
66-3D

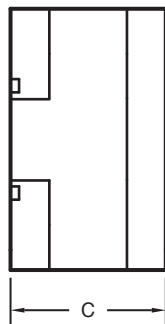


OTHER
66-3E

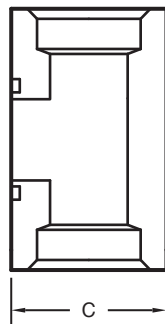
SAE & SQUARE BRANCH TEE FLANGES



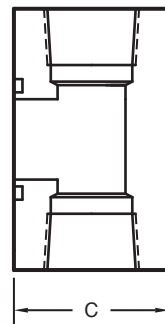
AVAILABLE IN BOTH
O-RING & FLAT FACED



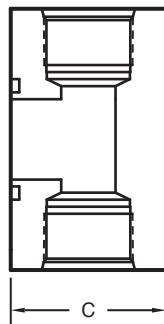
FLANGED
66-4A



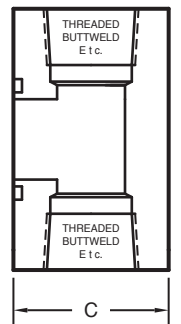
SOCKET WELD
66-4B



N P T F
66-4C

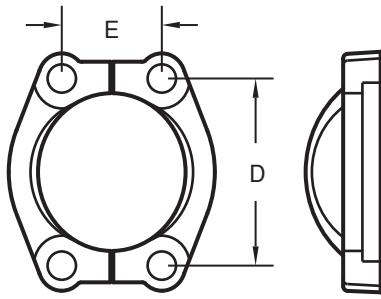


SAE O-RING BOSS
66-4D



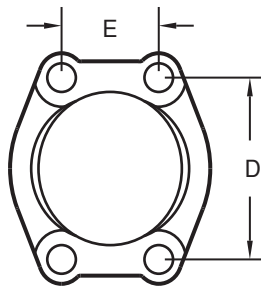
OTHER
66-4E

SPLIT FLANGES

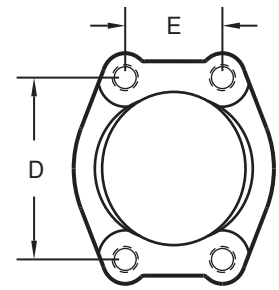
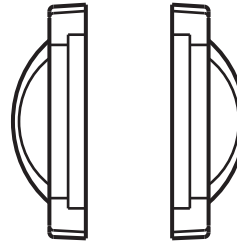


66-5

FLANGE CLAMPS



CLEARANCE HOLES
66-6A



TAPPED HOLES
66-6B

CONNECTOR PLATES & COVERS

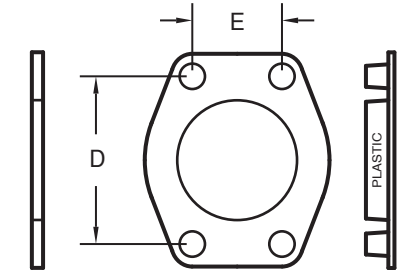
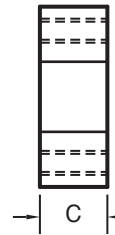
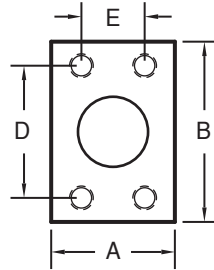


PLATE
66-7A



COVER
66-7B

CONNECTOR BLOCKS & RESERVOIR ADAPTERS



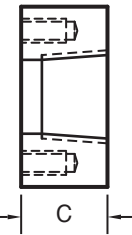
BLOCK
66-8A



PLAIN RA
66-8B

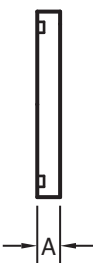
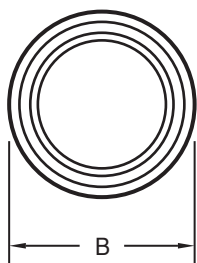


SW RA
66-8C

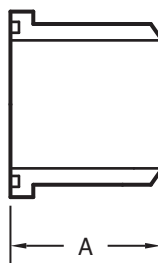


THREADED RA
66-8D

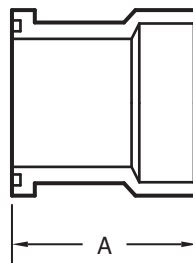
FLANGED PLUGS & HEADS



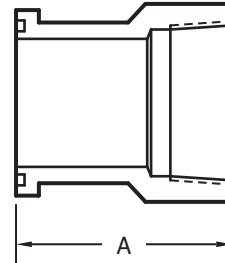
PLUG
66-9A



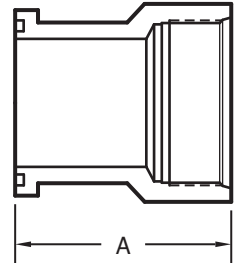
BUTT WELD
66-9B



SOCKET WELD
66-9C

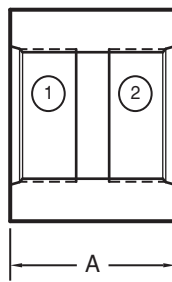
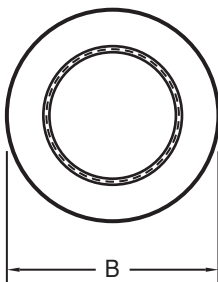


NPTF
66-9D

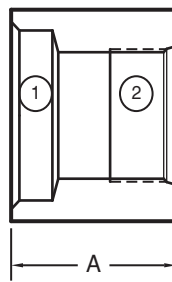


SAE O-RING BOSS
66-9E

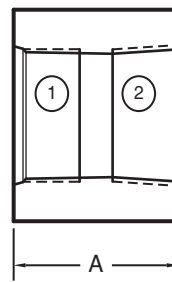
COUPLINGS



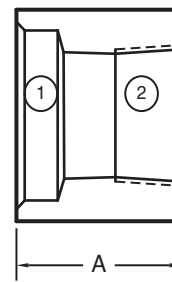
ORB x ORB
66-10A



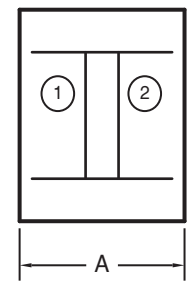
SW x ORB
66-10B



ORB x NPTF
66-10C

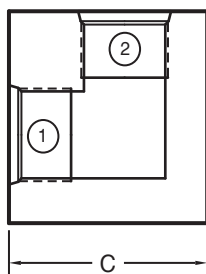
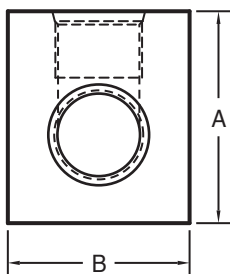


SW x NPTF
66-10D

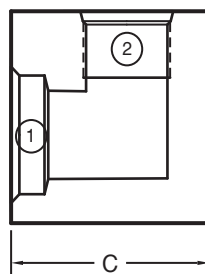


??? x ???
66-10E

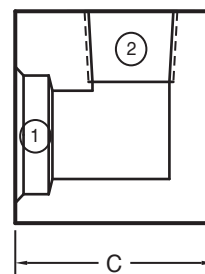
ELBOWS



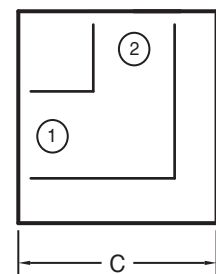
ORB x ORB
66-11A



SW x ORB
66-11B

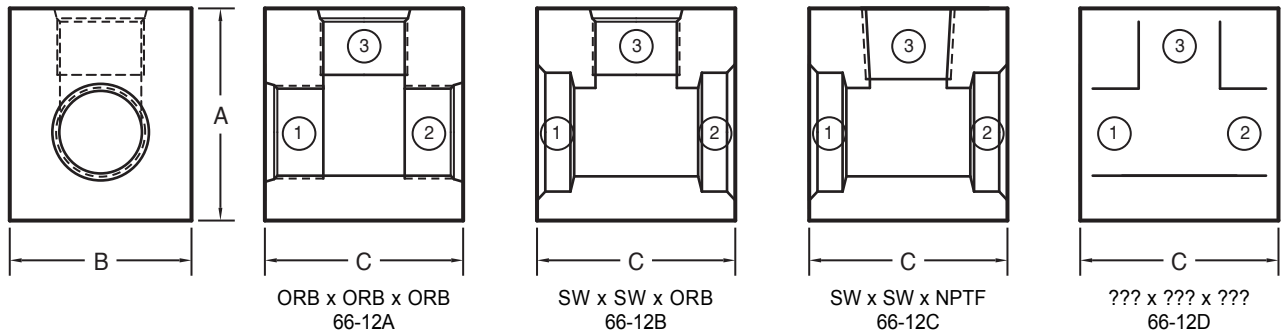


SW x NPTF
66-11C

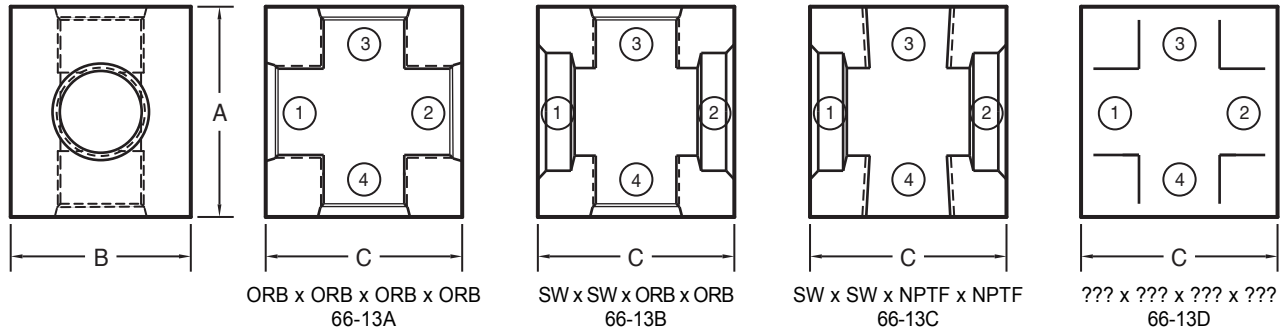


??? x ???
66-11D

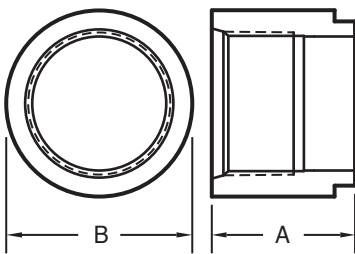
TEES



CROSSES

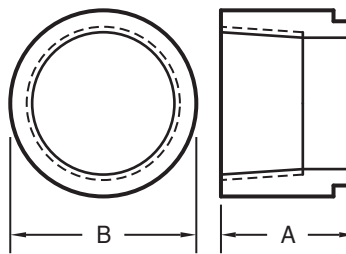


SAE O-RING BOSS TANK PORTS



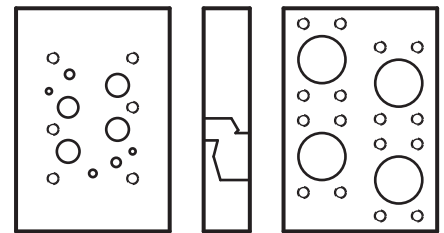
66-14

NPTF TANK PORTS



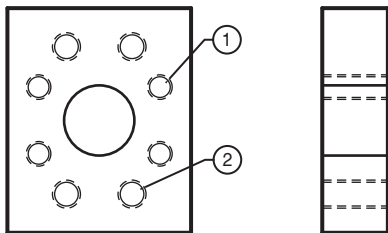
66-15

FLANGED SUBPLATES



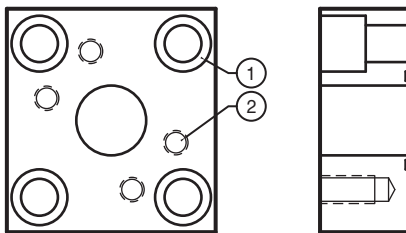
66-16

FLANGE ADAPTERS



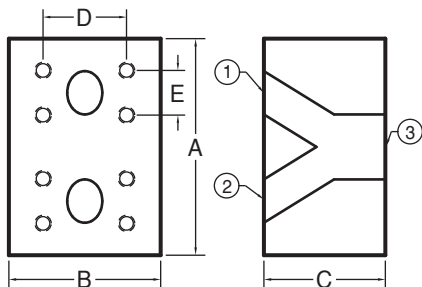
66-17

FLANGE ADAPTERS



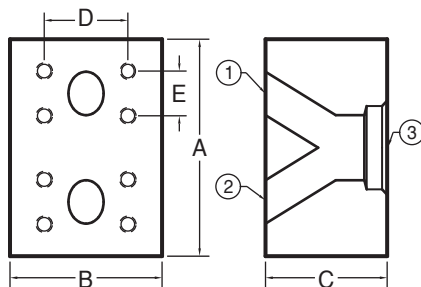
66-18

WYE FLANGES



66-19

WYE FLANGES



66-20

**FIND A PART &
CREATE-A-FLANGE**
are useful tools found at
www.MAINmfg.com

DON'T SEE IT??

E-MAIL a sketch to:
info@MAINmfg.com

or
**CALL one of our
knowledgeable
representatives
at**

800-521-7918



MAIN Manufacturing Products, Inc. Facility in Grand Blanc, Michigan

WHY MAIN?

AVAILABILITY & EFFICIENCY

- ✓ Over 5,000 non-catalog items in stock
 - ✓ Quick turn-around times
 - ✓ 48,000 Sq. Ft. US mfg. facility
 - ✓ Ports available include:
Socket Weld, Butt Weld, NPTF, BSPP,
BSPT, SAE St-Thd, & ISO 6149 Thd

EXPERIENCE & QUALITY

- ✓ Manufactured to the highest standards
- ✓ Engineering sits on SAE, NFPA, & ISO committees
 - ✓ Over 55 years experience
 - ✓ Knowledgeable Order Desk

Toll Free: 800-521-7918
info@MAINmfg.com
Fax: 810-953-1385



A U.S. Manufacturer

MAINmfg.com
3181 Tri-Park Drive
Grand Blanc, Michigan 48439