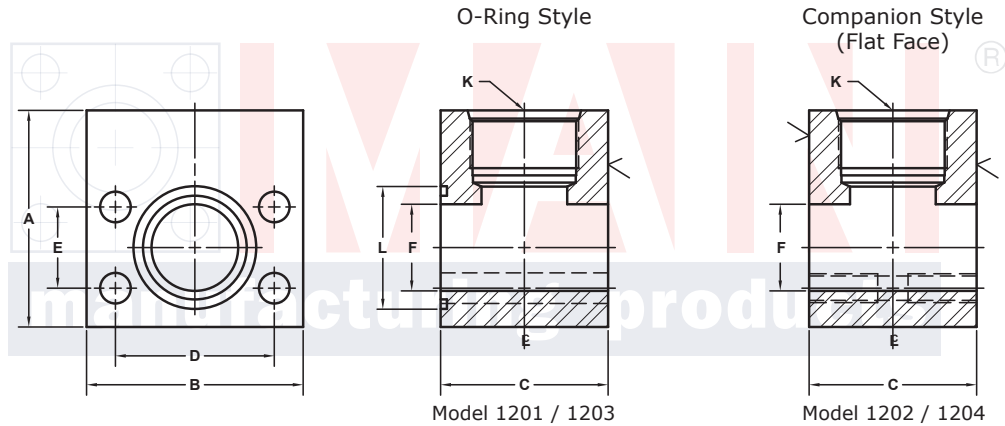
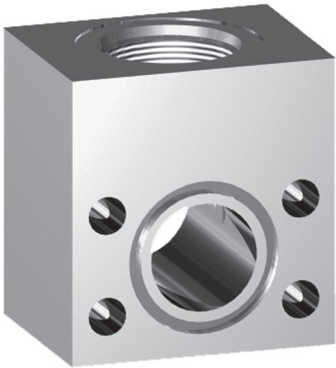


SAE J1926 THREADED RUN TEE FLANGES (Pg 1/2)

SAE BOLT PATTERN			61 SERIES									
FLANGE SIZE	ORB	PART NUMBER	A	B	C	D	E	F	K	L	O-RING [®]	WT
1/2	-4	1201-08-04	2.00	2.12	1.44	1.500	.688	.50	7/16-20	1.000	210	1.6
		1202-08-04								---	---	
1/2	-6	1201-08-06	2.00	2.12	1.44	1.500	.688	.50	9/16-18	1.000	210	1.5
		1202-08-06								---	---	
1/2	-8	1201-08-08	2.00	2.12	1.44	1.500	.688	.50	3/4-16	1.000	210	1.5
		1202-08-08								---	---	
3/4	-8	1201-12-08	2.50	2.62	1.70	1.875	.875	.75	3/4-16	1.250	214	2.7
		1202-12-08								---	---	
3/4	-10	1201-12-10	2.50	2.62	1.70	1.875	.875	.75	7/8-14	1.250	214	2.7
		1202-12-10								---	---	
3/4	-12	1201-12-12	2.50	2.62	1.70	1.875	.875	.75	1 1/16-12	1.250	214	2.5
		1202-12-12								---	---	
3/4	-16	1201-12-16	3.00	2.62	2.00	1.875	.875	.75	1 5/16-12	1.250	214	3.5
		1202-12-16								---	---	
1	-12	1201-16-12	3.00	2.82	1.94	2.062	1.031	1.00	1 1/16-12	1.562	219	3.8
		1202-16-12								---	---	
1	-14	1201-16-14	3.00	2.82	1.94	2.062	1.031	1.00	1 3/16-12	1.562	219	3.7
		1202-16-14								---	---	
1	-16	1201-16-16	3.00	2.82	1.94	2.062	1.031	1.00	1 5/16-12	1.562	219	3.5
		1202-16-16								---	---	
1	-20	1201-16-20	3.50	2.82	2.50	2.062	1.031	1.00	1 5/8-12	1.562	219	5.2
		1202-16-20								---	---	

MATERIAL:
Low Carbon Steel[®]



3181 TRI-PARK DR. GRAND BLANC, MI 48439 800-521-7918 810-953-1380 FAX 810-953-1385 INFO@MAINMFG.COM

SAE BOLT PATTERN			62 SERIES									
FLANGE SIZE	ORB	PART NUMBER	A	B	C	D	E	F	K	L	O-RING [®]	WT
1/2	-6	1203-08-06	2.00	2.22	1.46	1.594	.718	.50	9/16-18	1.000	210	1.7
		1204-08-06								---	---	
1/2	-8	1203-08-08	2.00	2.22	1.46	1.594	.718	.50	3/4-16	1.000	210	1.6
		1204-08-08								---	---	
3/4	-8	1203-12-08	2.50	2.81	1.70	2.000	.937	.75	3/4-16	1.250	214	3.0
		1204-12-08								---	---	
3/4	-10	1203-12-10	2.50	2.81	1.70	2.000	.937	.75	7/8-14	1.250	214	3.0
		1204-12-10								---	---	
3/4	-12	1203-12-12	2.50	2.81	1.70	2.000	.937	.75	1 1/16-12	1.250	214	2.7
		1204-12-12								---	---	
1	-12	1203-16-12	3.00	3.19	1.96	2.250	1.093	1.00	1 1/16-12	1.562	219	4.6
		1204-16-12								---	---	
1	-14	1203-16-14	3.00	3.19	1.96	2.250	1.093	1.00	1 3/16-12	1.562	219	4.5
		1204-16-14								---	---	
1	-16	1203-16-16	3.00	3.19	1.96	2.250	1.093	1.00	1 5/16-12	1.562	219	4.5
		1204-16-16								---	---	

① Includes Buna-N O-Ring

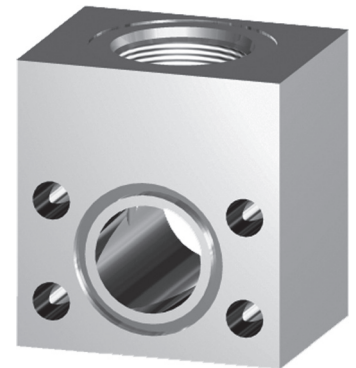
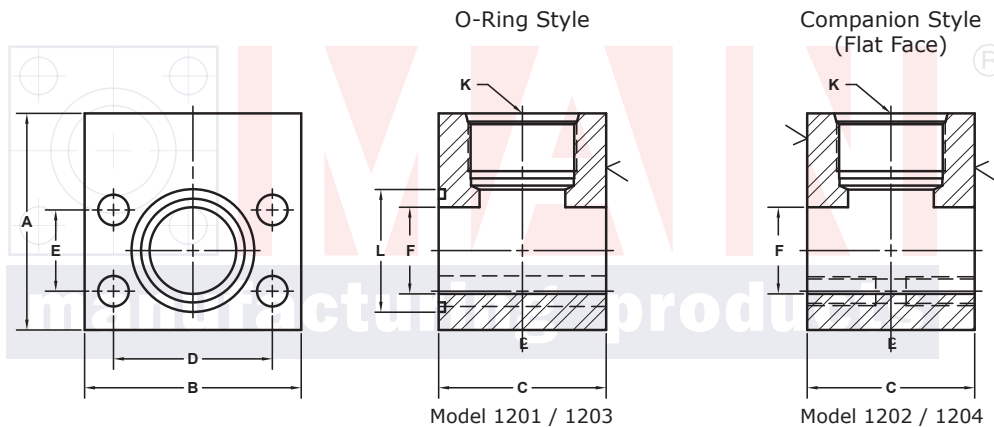
⑤ May Contain Lead

NOTE: The Pressure Rating of the Assembly Should NOT Exceed the Lower of the Flange Pad or the Fitting. Check the Fitting Manufacturer for Details.

SAE J1926 THREADED RUN TEE FLANGES (Pg 2/2)

SAE BOLT PATTERN			61 SERIES									
FLANGE SIZE	ORB	PART NUMBER	A	B	C	D	E	F	K	L	O-RING [®]	WT
1 1/4	-12	1201-20-12	3.50	3.19	2.40	2.312	1.188	1.25	1 1/16-12	1.750	222	6.1
		1202-20-12								---	---	
1 1/4	-16	1201-20-16	3.50	3.19	2.40	2.312	1.188	1.25	1 5/16-12	1.750	222	5.9
		1202-20-16								---	---	
1 1/4	-20	1201-20-20	3.50	3.19	2.40	2.312	1.188	1.25	1 5/8-12	1.750	222	5.5
		1202-20-20								---	---	
1 1/4	-24	1201-20-24	4.00	3.19	3.00	2.312	1.188	1.25	1 7/8-12	1.750	222	7.9
		1202-20-24								---	---	
1 1/2	-16	1201-24-16	4.00	3.75	2.90	2.750	1.406	1.50	1 5/16-12	2.125	225	9.7
		1202-24-16								---	---	
1 1/2	-20	1201-24-20	4.00	3.75	2.90	2.750	1.406	1.50	1 5/8-12	2.125	225	9.3
		1202-24-20								---	---	
1 1/2	-24	1201-24-24	4.00	3.75	2.90	2.750	1.406	1.50	1 7/8-12	2.125	225	9.0
		1202-24-24								---	---	
1 1/2	-32	1201-24-32	4.00	3.75	4.00	2.750	1.406	1.50	2 1/2-12	2.125	225	12.0
		1202-24-32								---	---	
2	-20	1201-32-20	4.50	4.00	3.00	3.062	1.688	1.94	1 5/8-12	2.500	228	11.3
		1202-32-20								---	---	
2	-24	1201-32-24	4.50	4.00	3.00	3.062	1.688	1.94	1 7/8-12	2.500	228	11.0
		1202-32-24								---	---	
2	-32	1201-32-32	4.25	4.00	3.94	3.062	1.688	1.94	2 1/2-12	2.500	228	12.8
		1202-32-32								---	---	

MATERIAL:
Low Carbon Steel[®]



3181 TRI-PARK DR. GRAND BLANC, MI 48439 800-521-7918 810-953-1380 FAX 810-953-1385 INFO@MAINMFG.COM

SAE BOLT PATTERN			62 SERIES									
FLANGE SIZE	ORB	PART NUMBER	A	B	C	D	E	F	K	L	O-RING [®]	WT
1 1/4	-12	1203-20-12	4.00	3.75	2.40	2.625	1.250	1.25	1 1/16-12	1.750	222	8.6
		1204-20-12								---	---	
1 1/4	-16	1203-20-16	4.00	3.75	2.40	2.625	1.250	1.25	1 5/16-12	1.750	222	8.4
		1204-20-16								---	---	
1 1/4	-20	1203-20-20	4.00	3.75	2.40	2.625	1.250	1.25	1 5/8-12	1.750	222	8.0
		1204-20-20								---	---	
1 1/2	-16	1203-24-16	4.00	4.50	2.96	3.125	1.437	1.50	1 5/16-12	2.125	225	12.1
		1204-24-16								---	---	
1 1/2	-20	1203-24-20	4.00	4.50	2.96	3.125	1.437	1.50	1 5/8-12	2.125	225	11.9
		1204-24-20								---	---	
1 1/2	-24	1203-24-24	4.00	4.50	2.96	3.125	1.437	1.50	1 7/8-12	2.125	225	11.6
		1204-24-24								---	---	
2	-24	1203-32-24	5.00	5.25	3.46	3.812	1.750	1.94	1 7/8-12	2.500	228	19.6
		1204-32-24								---	---	
2	-32	1203-32-32	5.00	5.25	3.94	3.812	1.750	1.94	2 1/2-12	2.500	228	21.6
		1204-32-32								---	---	

① Includes Buna-N O-Ring

⑤ May Contain Lead

NOTE: The Pressure Rating of the Assembly Should NOT Exceed the Lower of the Flange Pad or the Fitting. Check the Fitting Manufacturer for Details.