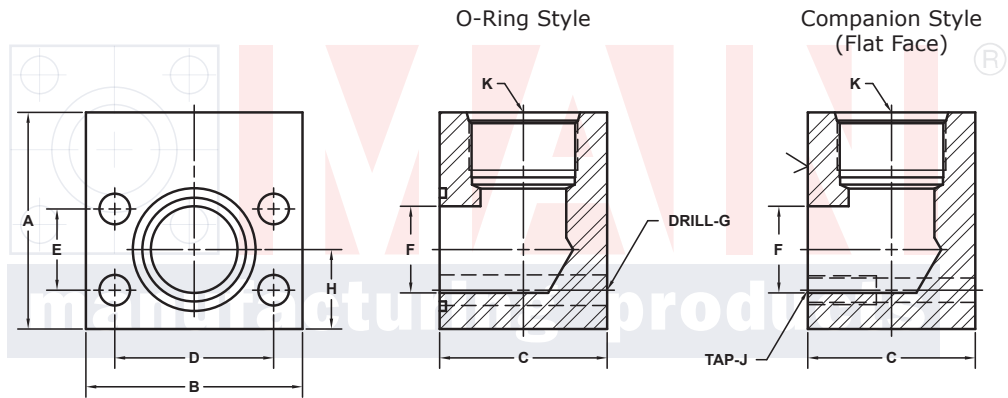
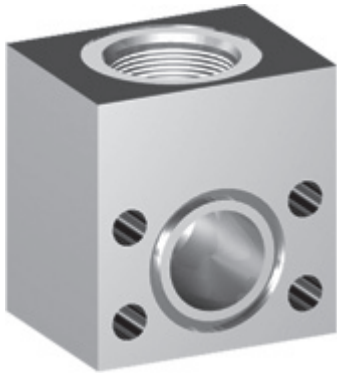


SAE J1926 THREADED ELBOW FLANGES (Pg 1/2)

SAE BOLT PATTERN										61 SERIES					
FLANGE SIZE	ORB	PART NUMBER	A	B	C	D	E	F	G J	H	K	MOUNTING KIT®			WT
												PART NO.	SCREW SIZE	O-RING	
1/2	-4	1177-08-04	2.00	2.12	1.44	1.500	.688	.50	.34	.75	7/16-20	MK 541	5/16-18 x 2	210	1.6
		1178-08-04	-----	-----	-----	-----	-----	-----	5/16-18	-----	-----	-----	-----	-----	
1/2	-6	1177-08-06	2.00	2.12	1.44	1.500	.688	.50	.34	.75	9/16-18	MK 541	5/16-18 x 2	210	1.5
		1178-08-06	-----	-----	-----	-----	-----	-----	5/16-18	-----	-----	-----	-----	-----	
1/2	-8	1177-08-08	2.00	2.12	1.44	1.500	.688	.50	.34	.75	3/4-16	MK 541	5/16-18 x 2	210	1.5
		1178-08-08	-----	-----	-----	-----	-----	-----	5/16-18	-----	-----	-----	-----	-----	
3/4	-8	1177-12-08	2.50	2.62	1.70	1.875	.875	.75	.41	.88	3/4-16	MK 542	3/8-16 x 2 1/2	214	2.8
		1178-12-08	-----	-----	-----	-----	-----	-----	3/8-16	-----	-----	-----	-----	-----	
3/4	-10	1177-12-10	2.50	2.62	1.70	1.875	.875	.75	.41	.88	7/8-14	MK 542	3/8-16 x 2 1/2	214	2.7
		1178-12-10	-----	-----	-----	-----	-----	-----	3/8-16	-----	-----	-----	-----	-----	
3/4	-12	1177-12-12	2.50	2.62	1.70	1.875	.875	.75	.41	.88	1 1/16-12	MK 542	3/8-16 x 2 1/2	214	2.5
		1178-12-12	-----	-----	-----	-----	-----	-----	3/8-16	-----	-----	-----	-----	-----	
3/4	-16	1177-12-16	3.00	2.62	2.00	1.875	.875	.75	.41	.88	1 5/16-12	MK 3513	3/8-16 x 2 3/4	214	3.4
		1178-12-16	-----	-----	-----	-----	-----	-----	3/8-16	-----	-----	-----	-----	-----	
1	-12	1177-16-12	3.00	2.82	1.94	2.062	1.031	1.00	.41	1.00	1 1/16-12	MK 543	3/8-16 x 2 3/4	219	4.0
		1178-16-12	-----	-----	-----	-----	-----	-----	3/8-16	-----	-----	-----	-----	-----	
1	-14	1177-16-14	3.00	2.82	1.94	2.062	1.031	1.00	.41	1.00	1 3/16-12	MK 543	3/8-16 x 2 3/4	219	3.9
		1178-16-14	-----	-----	-----	-----	-----	-----	3/8-16	-----	-----	-----	-----	-----	
1	-16	1177-16-16	3.00	2.82	1.94	2.062	1.031	1.00	.41	1.00	1 5/16-12	MK 543	3/8-16 x 2 3/4	219	3.7
		1178-16-16	-----	-----	-----	-----	-----	-----	3/8-16	-----	-----	-----	-----	-----	
1	-20	1177-16-20	3.50	2.82	2.50	2.062	1.031	1.00	.41	1.00	1 5/8-12	MK 577	3/8-16 x 3 1/4	219	4.4
		1178-16-20	-----	-----	-----	-----	-----	-----	3/8-16	-----	-----	-----	-----	-----	

MATERIAL:
Low Carbon Steel[®]



Model 1177 / 1179

Model 1178 / 1180

3181 TRI-PARK DR. GRAND BLANC, MI 48439 800-521-7918 810-953-1380 FAX 810-953-1385 INFO@MAINMFG.COM

SAE BOLT PATTERN										62 SERIES					
FLANGE SIZE	ORB	PART NUMBER	A	B	C	D	E	F	G J	H	K	MOUNTING KIT®			WT
												PART NO.	SCREW SIZE	O-RING	
1/2	-6	1179-08-06	2.00	2.22	1.46	1.594	.718	.50	.34	.88	9/16-18	MK 541	5/16-18 x 2	210	1.6
		1180-08-06	-----	-----	-----	-----	-----	-----	5/16-18	-----	-----	-----	-----	-----	
1/2	-8	1179-08-08	2.00	2.22	1.46	1.594	.718	.50	.34	.88	3/4-16	MK 541	5/16-18 x 2	210	1.6
		1180-08-08	-----	-----	-----	-----	-----	-----	5/16-18	-----	-----	-----	-----	-----	
3/4	-8	1179-12-08	2.50	2.81	1.70	2.000	.937	.75	.41	1.00	3/4-16	MK 542	3/8-16 x 2 1/2	214	3.1
		1180-12-08	-----	-----	-----	-----	-----	-----	3/8-16	-----	-----	-----	-----	-----	
3/4	-10	1179-12-10	2.50	2.81	1.70	2.000	.937	.75	.41	1.00	7/8-14	MK 542	3/8-16 x 2 1/2	214	3.0
		1180-12-10	-----	-----	-----	-----	-----	-----	3/8-16	-----	-----	-----	-----	-----	
3/4	-12	1179-12-12	2.50	2.81	1.70	2.000	.937	.75	.41	1.00	1 1/16-12	MK 542	3/8-16 x 2 1/2	214	2.8
		1180-12-12	-----	-----	-----	-----	-----	-----	3/8-16	-----	-----	-----	-----	-----	
1	-12	1179-16-12	3.00	3.19	1.96	2.250	1.093	1.00	.47	1.12	1 1/16-12	MK 551	7/16-14 x 2 3/4	219	4.6
		1180-16-12	-----	-----	-----	-----	-----	-----	7/16-14	-----	-----	-----	-----	-----	
1	-14	1179-16-14	3.00	3.19	1.96	2.250	1.093	1.00	.47	1.12	1 3/16-12	MK 551	7/16-14 x 2 3/4	219	4.5
		1180-16-14	-----	-----	-----	-----	-----	-----	7/16-14	-----	-----	-----	-----	-----	
1	-16	1179-16-16	3.00	3.19	1.96	2.250	1.093	1.00	.47	1.12	1 5/16-12	MK 551	7/16-14 x 2 3/4	219	4.3
		1180-16-16	-----	-----	-----	-----	-----	-----	7/16-14	-----	-----	-----	-----	-----	

① Order Separately

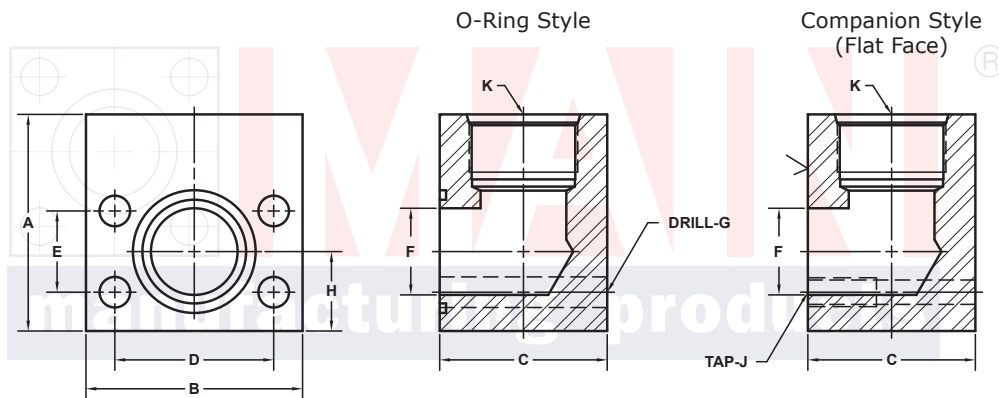
® May Contain Lead

NOTE: The Pressure Rating of the Assembly Should NOT Exceed the Lower of the Flange Pad or the Fitting. Check the Fitting Manufacturer for Details.

SAE J1926 THREADED ELBOW FLANGES (Pg 2/2)

SAE BOLT PATTERN											61 SERIES					
FLANGE SIZE	ORB	PART NUMBER	A	B	C	D	E	F	G		H	K	MOUNTING KIT ^①			WT
									J				PART NO.	SCREW SIZE	O-RING	
1 1/4	-16	1177-20-16	3.50	3.19	2.40	2.312	1.188	1.25	.47	1.25	1 5/16-12	MK 578	7/16-14 x 3 1/4	222	6.3	
		1178-20-16							7/16-14							
1 1/4	-20	1177-20-20	3.50	3.19	2.40	2.312	1.188	1.25	.47	1.25	1 5/8-12	MK 578	7/16-14 x 3 1/4	222	6.1	
		1178-20-20							7/16-14							
1 1/4	-24	1177-20-24	4.00	3.19	3.00	2.312	1.188	1.25	.47	1.25	1 7/8-12	MK 591	7/16-14 x 4	222	8.1	
		1178-20-24							7/16-14							
1 1/2	-16	1177-24-16	4.00	3.75	2.90	2.750	1.406	1.50	.53	1.38	1 5/16-12	MK 545	1/2-13 x 4	225	10.1	
		1178-24-16							1/2-13							
1 1/2	-20	1177-24-20	4.00	3.75	2.90	2.750	1.406	1.50	.53	1.38	1 5/8-12	MK 545	1/2-13 x 4	225	10.0	
		1178-24-20							1/2-13							
1 1/2	-24	1177-24-24	4.00	3.75	2.90	2.750	1.406	1.50	.53	1.38	1 7/8-12	MK 545	1/2-13 x 4	225	9.8	
		1178-24-24							1/2-13							
1 1/2	-32	1177-24-32	4.00	4.00	4.00	2.750	1.406	1.50	.53	1.38	2 1/2-12	MK 1508	1/2-13 x 5	225	13.6	
		1178-24-32							1/2-13							
2	-16	1177-32-16	4.50	4.00	3.00	3.062	1.688	1.94	.53	1.62	1 5/16-12	MK 558	1/2-13 x 4	228	12.0	
		1178-32-16							1/2-13							
2	-20	1177-32-20	4.50	4.00	3.00	3.062	1.688	1.94	.53	1.62	1 5/8-12	MK 558	1/2-13 x 4	228	11.6	
		1178-32-20							1/2-13							
2	-24	1177-32-24	4.50	4.00	3.00	3.062	1.688	1.94	.53	1.62	1 7/8-12	MK 558	1/2-13 x 4	228	11.1	
		1178-32-24							1/2-13							
2	-32	1177-32-32	4.25	4.00	3.94	3.062	1.688	1.94	.53	1.62	2 1/2-12	MK 592	1/2-13 x 5	228	13.9	
		1178-32-32							1/2-13							

MATERIAL:
Low Carbon Steel[®]



Model 1177 / 1179

Model 1178 / 1180

3181 TRI-PARK DR. GRAND BLANC, MI 48439 800-521-7918 810-953-1380 FAX 810-953-1385 INFO@MAINMFG.COM

SAE BOLT PATTERN											62 SERIES					
FLANGE SIZE	ORB	PART NUMBER	A	B	C	D	E	F	G		H	K	MOUNTING KIT ^①			WT
									J				PART NO.	SCREW SIZE	O-RING	
1 1/4	-16	1179-20-16	4.00	3.75	2.40	2.625	1.250	1.25	.53	1.38	1 5/16-12	MK 552	1/2-13 x 3 1/4	222	8.6	
		1180-20-16							1/2-13							
1 1/4	-20	1179-20-20	4.00	3.75	2.40	2.625	1.250	1.25	.53	1.38	1 5/8-12	MK 552	1/2-13 x 3 1/4	222	8.6	
		1180-20-20							1/2-13							
1 1/2	-16	1179-24-16	4.00	4.50	2.96	3.125	1.437	1.50	.66	1.62	1 5/16-12	MK 553	5/8-11 x 4	225	12.7	
		1180-24-16							5/8-11							
1 1/2	-20	1179-24-20	4.00	4.50	2.96	3.125	1.437	1.50	.66	1.62	1 5/8-12	MK 553	5/8-11 x 4	225	12.5	
		1180-24-20							5/8-11							
1 1/2	-24	1179-24-24	4.00	4.50	2.96	3.125	1.437	1.50	.66	1.62	1 7/8-12	MK 553	5/8-11 x 4	225	12.2	
		1180-24-24							5/8-11							
2	-20	1179-32-20	5.00	5.25	3.46	3.812	1.750	1.94	.78	2.00	1 5/8-12	MK 554	3/4-10 x 4 1/2	228	15.9	
		1180-32-20							3/4-10							
2	-24	1179-32-24	5.00	5.25	3.46	3.812	1.750	1.94	.78	2.00	1 7/8-12	MK 554	3/4-10 x 4 1/2	228	15.5	
		1180-32-24							3/4-10							
2	-32	1179-32-32	5.00	5.25	3.94	3.812	1.750	1.94	.78	2.00	2 1/2-12	MK 1507	3/4-10 x 5	228	21.1	
		1180-32-32							3/4-10							

① Order Separately

⑤ May Contain Lead

NOTE: The Pressure Rating of the Assembly Should NOT Exceed the Lower of the Flange Pad or the Fitting. Check the Fitting Manufacturer for Details.