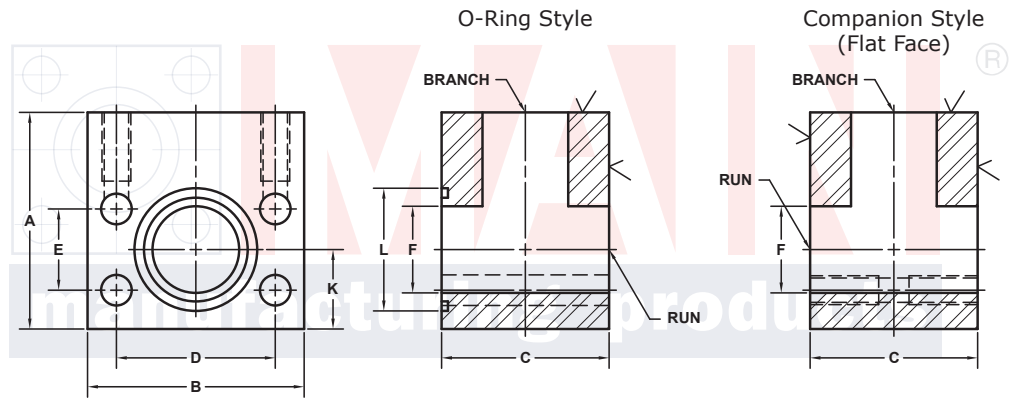
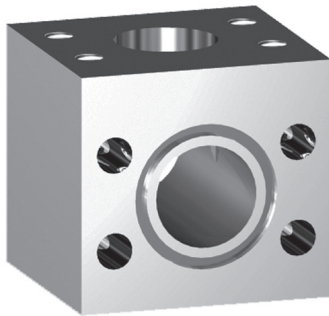


# FLANGED RUN TEE FLANGES (Pg 1/2)

SAE BOLT PATTERN			61 SERIES									
RUN SIZE	BRANCH SIZE	PART NUMBER	A	B	C	D	E	F	K	L	O-RING <sup>①</sup>	WT
1/2	1/2	1579-08-08	2.25	2.12	2.25	1.500	.688	.50	.78	1.000	210	2.6
		1580-08-08	USE PART # 1576-08-08									
3/4	3/4	1205-12-12	2.50	2.62	2.25	1.875	.875	.75	1.03	1.250	214	3.5
		1206-12-12	USE PART # 1186-12-12									
1	3/4	1205-16-12	2.50	2.82	2.50	2.062	1.031	1.00	1.09	1.562	219	4.1
		1206-16-12								---	---	
1	1	1205-16-16	2.50	2.82	2.50	2.062	1.031	1.00	1.09	1.562	219	4.0
		1206-16-16	USE PART # 1186-16-16									
1 1/4	1	1205-20-16	3.25	3.19	3.25	2.312	1.188	1.25	1.38	1.750	222	7.5
		1206-20-16								---	---	
1 1/4	1 1/4	1205-20-20	3.25	3.19	3.25	2.312	1.188	1.25	1.38	1.750	222	7.2
		1206-20-20	USE PART # 1186-20-20									
1 1/4	1 1/2	1205-20-24	3.50	3.75	3.50	2.312	1.188	1.25	1.38	1.750	222	10.3
		1206-20-24	USE PART # 1186-24-20									
1 1/2	1	1205-24-16	4.00	3.75	3.00	2.750	1.406	1.50	1.38	2.125	225	10.2
		1206-24-16								---	---	
1 1/2	1 1/4	1205-24-20	4.00	3.75	3.00	2.750	1.406	1.50	1.38	2.125	225	10.0
		1206-24-20	---	---								
1 1/2	1 1/2	1205-24-24	3.50	3.75	3.50	2.750	1.406	1.50	1.62	2.125	225	10.0
		1206-24-24	USE PART # 1186-24-24									
1 1/2	2	1205-24-32	4.00	4.00	4.00	2.750	1.406	1.50	1.62	2.125	225	14.0
		1206-24-32	USE PART # 1186-32-24									

MATERIAL:  
Low Carbon Steel<sup>®</sup>



Model 1205 / 1207

Model 1206 / 1208

3181 TRI-PARK DR. GRAND BLANC, MI 48439 800-521-7918 810-953-1380 FAX 810-953-1385 INFO@MAINMFG.COM

SAE BOLT PATTERN			62 SERIES									
RUN SIZE	BRANCH SIZE	PART NUMBER	A	B	C	D	E	F	K	L	O-RING <sup>①</sup>	WT
1/2	1/2	1207-08-08	2.00	2.22	2.00	1.594	.718	.50	.81	1.000	210	2.1
		1208-08-08	USE PART # 1188-08-08									
3/4	3/4	1207-12-12	2.50	2.82	2.50	2.000	.937	.75	1.06	1.250	214	4.3
		1208-12-12	USE PART # 1188-12-12									
1	3/4	1207-16-12	3.00	3.19	3.00	2.250	1.093	1.00	1.38	1.562	219	6.8
		1208-16-12								---	---	
1	1	1207-16-16	3.00	3.19	3.00	2.250	1.093	1.00	1.38	1.562	219	6.5
		1208-16-16	USE PART # 1188-16-16									
1	1 1/4	1207-16-20	3.50	3.75	3.50	2.250	1.093	1.00	1.41	1.562	219	10.9
		1208-16-20	USE PART # 1188-20-16									
1 1/4	1	1207-20-16	3.50	3.75	3.00	2.625	1.250	1.25	1.50	1.750	222	9.0
		1208-20-16								---	---	
1 1/4	1 1/4	1207-20-20	3.50	3.75	3.50	2.625	1.250	1.25	1.41	1.750	222	10.2
		1208-20-20	USE PART # 1188-20-20									
1 1/4	1 1/2	1207-20-24	4.00	4.50	4.00	2.625	1.250	1.25	1.75	1.750	222	17.0
		1208-20-24	USE PART # 1188-24-20									

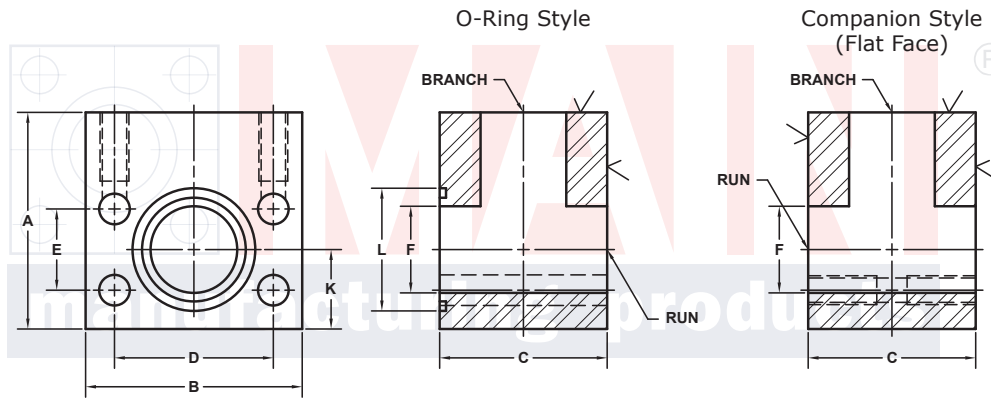
① Includes Buna-N O-Ring

⑤ May Contain Lead

# FLANGED RUN TEE FLANGES (Pg 2/2)

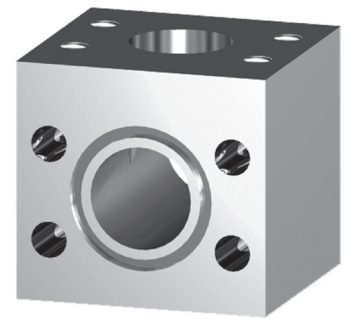
SAE BOLT PATTERN			61 SERIES									
RUN SIZE	BRANCH SIZE	PART NUMBER	A	B	C	D	E	F	K	L	O-RING <sup>①</sup>	WT
<b>2</b>	<b>1 1/4</b>	1205-32-20	4.50	4.00	3.00	3.062	1.688	1.94	1.62	2.500	228	11.4
		1206-32-20								---	---	
<b>2</b>	<b>1 1/2</b>	1205-32-24	4.00	4.00	4.00	3.062	1.688	1.94	1.91	2.500	228	13.2
		1206-32-24								---	---	
<b>2</b>	<b>2</b>	1205-32-32	4.00	4.00	4.00	3.062	1.688	1.94	1.91	2.500	228	12.8
		1206-32-32										
<b>2</b>	<b>2 1/2</b> <sup>②</sup>	1205-32-40	4.00	4.50	4.50	3.062	1.688	1.94	1.62	2.500	228	16.5
		1206-32-40	USE PART # 1186-40-32		---	---						
<b>2 1/2</b> <sup>②</sup>	<b>2</b>	1205-40-32	4.50	4.50	4.50	3.500	2.000	2.44	2.25	3.000	232	17.8
		1206-40-32								---	---	
<b>2 1/2</b> <sup>②</sup>	<b>2 1/2</b>	1205-40-40	4.50	4.50	4.50	3.500	2.000	2.44	2.25	3.000	232	17.2
		1206-40-40										
<b>3</b> <sup>③</sup>	<b>2</b>	1205-48-32	5.00	5.31	4.00	4.188	2.438	2.94	2.25	3.625	237	19.7
		1206-48-32								---	---	
<b>3</b> <sup>③</sup>	<b>3</b>	1205-48-48	5.50	5.31	5.50	4.188	2.438	2.94	2.75	3.625	237	30.0
		1206-48-48										
<b>3 1/2</b> <sup>④</sup>	<b>3 1/2</b>	1205-56-56	6.00	6.00	6.00	4.750	2.750	3.44	3.00	4.109	241	39.0
		1206-56-56										
<b>4</b> <sup>④</sup>	<b>4</b>	1205-64-64	6.00	6.38	6.00	5.125	3.062	3.94	3.00	4.609	245	37.5
		1206-64-64										
<b>5</b> <sup>④</sup>	<b>5</b>	1205-80-80	6.00	6.00	6.00	6.000	3.625	---	---	5.609	253	---
		1206-80-80										

**MATERIAL:**  
**Low Carbon Steel<sup>®</sup>**



Model 1205 / 1207

Model 1206 / 1208



3181 TRI-PARK DR. GRAND BLANC, MI 48439 800-521-7918 810-953-1380 FAX 810-953-1385 INFO@MAINMFG.COM

SAE BOLT PATTERN			62 SERIES									
RUN SIZE	BRANCH SIZE	PART NUMBER	A	B	C	D	E	F	K	L	O-RING <sup>①</sup>	WT
<b>1 1/2</b>	<b>1</b>	1207-24-16	3.50	4.50	3.00	3.125	1.437	1.50	1.62	2.125	225	10.3
		1208-24-16								---	---	
<b>1 1/2</b>	<b>1 1/4</b>	1207-24-20	4.00	4.50	4.00	3.125	1.437	1.50	1.75	2.125	225	16.3
		1208-24-20								---	---	
<b>1 1/2</b>	<b>1 1/2</b>	1207-24-24	4.00	4.50	4.00	3.125	1.437	1.50	1.75	2.125	225	16.0
		1208-24-24										
<b>2</b>	<b>1 1/4</b>	1207-32-20	5.00	5.25	4.00	3.812	1.750	1.94	2.25	2.500	228	23.6
		1208-32-20								---	---	
<b>2</b>	<b>1 1/2</b>	1207-32-24	5.00	5.25	5.00	3.812	1.750	1.94	2.50	2.500	228	29.3
		1208-32-24								---	---	
<b>2</b>	<b>2</b>	1207-32-32	5.00	5.25	5.00	3.812	1.750	1.94	2.50	2.500	228	28.7
		1208-32-32										
<b>2 1/2</b>	<b>2 1/2</b>	1207-40-40	6.00	7.00	6.00	4.875	2.312	2.44	2.50	3.000	232	54.5
		1208-40-40										
<b>3</b>	<b>3</b>	1207-48-48	7.00	8.50	7.00	6.000	2.812	2.94	3.00	3.625	237	88.7
		1208-48-48										

① Includes Buna-N O-Ring ② 2500 PSI Max ③ 2000 PSI Max ④ 500 PSI Max

⑤ May Contain Lead