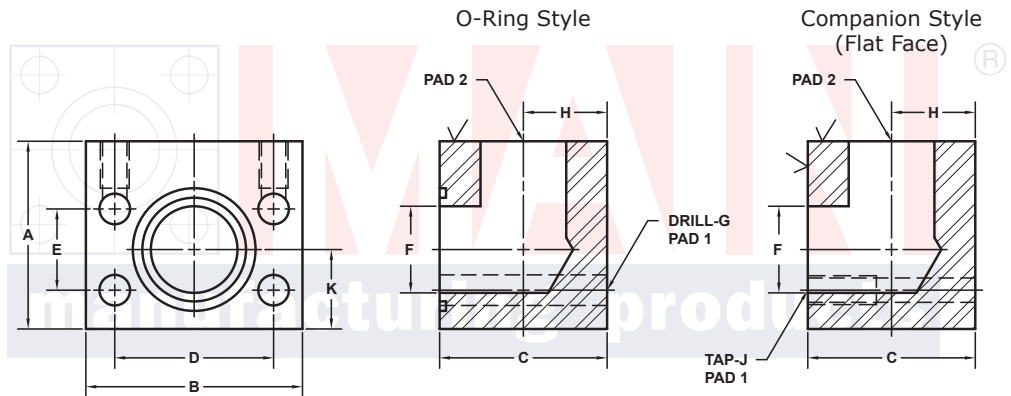


FLANGED ELBOW FLANGES (Pg 1/2)

SAE BOLT PATTERN										61 SERIES					
PAD 1 SIZE	PAD 2 SIZE	PART NUMBER	A	B	C	D	E	F	G J	H	K	MOUNTING KIT®			WT
												PART NO.	SCREW SIZE	O-RING	
1/2	1/2	1571-08-08	2.25	2.12	2.25	1.500	.688	.50	.34	.78	.78	MK 3509	5/16-18 x 2 3/4	210	2.8
		1572-08-08							5/16-18						
3/4	3/4	1181-12-12	2.50	2.62	2.25	1.875	.875	.75	.41	1.03	1.03	MK 576	3/8-16 x 3	214	3.5
		1182-12-12							3/8-16						
3/4	1	1181-12-16	2.50	2.82	2.50	1.875	.875	.75	.41	1.25	1.03	MK 595	3/8-16 x 3 1/4	214	4.3
		-----							USE PART # 1182-16-12						
1	1	1181-16-16	2.50	2.82	2.50	2.062	1.031	1.00	.41	1.16	1.09	MK 577	3/8-16 x 3 1/4	219	4.0
		1182-16-16							3/8-16						
1	1 1/4	1181-16-20	3.00	3.25	3.00	2.062	1.031	1.00	.41	1.44	1.09	MK 2588	3/8-16 x 3 3/4	219	7.0
		-----							USE PART # 1182-20-16						
1 1/4	1	1181-20-16	3.25	3.19	3.25	2.312	1.188	1.25	.47	1.38	1.38	MK 591	7/16-14 x 4	222	8.2
		1182-20-16							7/16-14						
1 1/4	1 1/4	1181-20-20	3.25	3.19	3.25	2.312	1.188	1.25	.47	1.38	1.38	MK 591	7/16-14 x 4	222	7.9
		1182-20-20							7/16-14						
1 1/4	1 1/2	1181-20-24	3.50	3.75	3.50	2.312	1.188	1.25	.47	1.62	1.38	MK 2560	7/16-14 x 4 1/2	222	11.0
		-----							USE PART # 1182-24-20						
1 1/2	1 1/4	1181-24-20	4.00	3.75	3.00	2.750	1.406	1.50	.53	1.50	1.38	MK 545	1/2-13 x 4	225	10.7
		1182-24-20							1/2-13						
1 1/2	1 1/2	1181-24-24	3.50	3.75	3.50	2.750	1.406	1.50	.53	1.62	1.62	MK 579	1/2-13 x 4 1/2	225	10.7
		1182-24-24							1/2-13						
1 1/2	2	1181-24-32	4.00	4.00	4.00	2.750	1.406	1.50	.53	1.91	1.62	MK 1508	1/2-13 x 5	225	14.6
		-----							USE PART # 1182-32-24						

MATERIAL:
Low Carbon Steel®



Model 1181 / 1183

Model 1182 / 1184

3181 TRI-PARK DR. GRAND BLANC, MI 48439 800-521-7918 810-953-1380 FAX 810-953-1385 INFO@MAINMFG.COM

SAE BOLT PATTERN										62 SERIES					
PAD 1 SIZE	PAD 2 SIZE	PART NUMBER	A	B	C	D	E	F	G J	H	K	MOUNTING KIT®			WT
												PART NO.	SCREW SIZE	O-RING	
1/2	1/2	1183-08-08	2.00	2.22	2.00	1.594	.718	.50	.34	.94	.81	MK 575	5/16-18 x 2 1/2	210	2.3
		1184-08-08							5/16-18						
3/4	1/2	1183-12-08	2.50	2.81	2.50	2.000	.937	.75	.41	1.19	1.06	MK 595	3/8-16 x 3 1/4	214	4.5
		1184-12-08							3/8-16						
3/4	3/4	1183-12-12	2.50	2.81	2.50	2.000	.937	.75	.41	1.19	1.06	MK 595	3/8-16 x 3 1/4	214	4.4
		1184-12-12							3/8-16						
1	3/4	1183-16-12	3.00	3.19	3.00	2.250	1.093	1.00	.47	1.38	1.38	MK 596	7/16-14 x 4	219	7.3
		1184-16-12							7/16-14						
1	1	1183-16-16	3.00	3.19	3.00	2.250	1.093	1.00	.47	1.38	1.38	MK 596	7/16-14 x 4	219	7.2
		1184-16-16							7/16-14						
1 1/4	1	1183-20-16	3.50	3.75	3.00	2.625	1.250	1.25	.53	1.41	1.50	MK 587	1/2-13 x 4	222	9.3
		1184-20-16							1/2-13						
1 1/4	1 1/4	1183-20-20	3.50	3.75	3.50	2.625	1.250	1.25	.53	1.62	1.41	MK 4565	1/2-13 x 4 1/2	222	10.8
		1184-20-20							1/2-13						
1 1/4	1 1/2	1183-20-24	4.00	4.50	4.00	2.625	1.250	1.25	.53	1.90	1.75	MK 2564	1/2-13 x 5	222	17.5
		-----							USE PART # 1184-24-20						

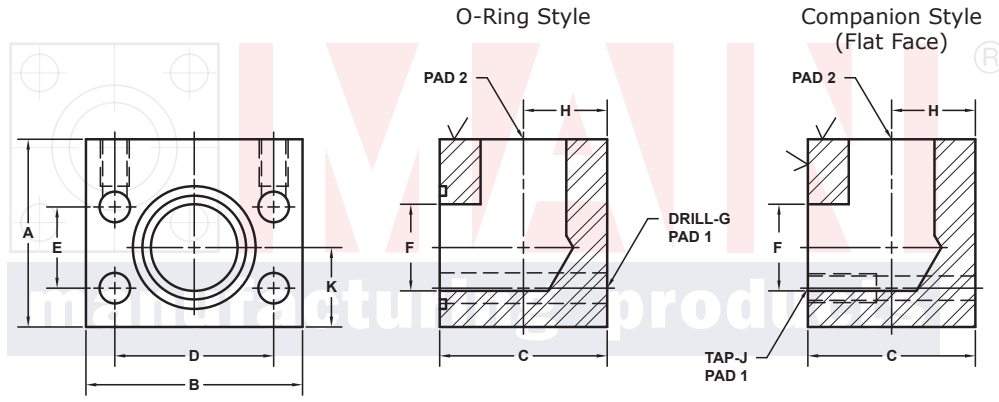
① Order Separately

⑤ May Contain Lead

FLANGED ELBOW FLANGES (Pg 2/2)

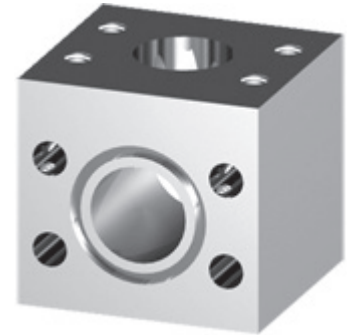
SAE BOLT PATTERN										61 SERIES					
PAD 1 SIZE	PAD 2 SIZE	PART NUMBER	A	B	C	D	E	F	G J	H	K	MOUNTING KIT®			WT
												PART NO.	SCREW SIZE	O-RING	
2	1 1/4	1181-32-20	4.50	4.00	3.00	3.062	1.688	1.94	.53	1.44	1.62	MK 558	1/2-13 x 4	228	12.3
		1182-32-20							1/2-13			-----	---		
2	1 1/2	1181-32-24	4.00	4.00	4.00	3.062	1.688	1.94	.53	1.91	1.91	MK 592	1/2-13 x 5	228	14.5
		1182-32-24							1/2-13			-----	---		
2	2	1181-32-32	4.00	4.00	4.00	3.062	1.688	1.94	.53	1.91	1.91	MK 592	1/2-13 x 5	228	13.9
		1182-32-32							1/2-13			-----	---		
2 1/2 ^②	2	1181-40-32	4.50	4.50	4.50	3.500	2.000	2.44	.53	2.14	2.25	MK 593	1/2-13 x 5 1/2	232	19.8
		1182-40-32							1/2-13			-----	---		
2 1/2 ^②	2 1/2	1181-40-40	4.50	4.50	4.50	3.500	2.000	2.44	.53	2.14	2.25	MK 593	1/2-13 x 5 1/2	232	18.8
		1182-40-40							1/2-13			-----	---		
3 ^③	2	1181-48-32	5.00	5.31	4.00	4.188	2.438	2.94	.66	1.91	2.25	MK 1583	5/8-11 x 5	237	22.1
		1182-48-32							5/8-11			-----	---		
3 ^③	2 1/2	1181-48-40	5.50	5.31	5.50	4.188	2.438	2.94	.66	2.58	2.75	MK 594	5/8-11 x 6 1/2	237	34.3
		1182-48-40							5/8-11			-----	---		
3 ^③	3	1181-48-48	5.50	5.31	5.50	4.188	2.438	2.94	.66	2.58	2.75	MK 594	5/8-11 x 6 1/2	237	32.7
		1182-48-48							5/8-11			-----	---		
3 1/2 ^④	3 1/2	1181-56-56	6.00	6.00	6.00	4.750	2.750	3.44	.66	3.00	3.00	MK 1589	5/8-11 x 7	241	45.0
		1182-56-56							5/8-11			-----	---		
4 ^④	4	1181-64-64	6.00	6.38	6.00	5.125	3.062	3.94	.66	2.81	3.00	MK 550	5/8-11 x 7	245	43.0
		1182-64-64							5/8-11			-----	---		
5 ^④	5	1181-80-80				6.000	3.625		.66					253	
		1182-80-80							5/8-11			-----	---		

MATERIAL:
Low Carbon Steel [®]



Model 1181 / 1183

Model 1182 / 1184



3181 TRI-PARK DR. GRAND BLANC, MI 48439 800-521-7918 810-953-1380 FAX 810-953-1385 INFO@MAINMFG.COM

SAE BOLT PATTERN										62 SERIES					
PAD 1 SIZE	PAD 2 SIZE	PART NUMBER	A	B	C	D	E	F	G J	H	K	MOUNTING KIT®			WT
												PART NO.	SCREW SIZE	O-RING	
1 1/2	1 1/4	1183-24-20	4.00	4.50	4.00	3.125	1.437	1.50	.66	1.88	1.75	MK 597	5/8-11 x 5	225	17.4
		1184-24-20							5/8-11			-----	---		
1 1/2	1 1/2	1183-24-24	4.00	4.50	4.00	3.125	1.437	1.50	.66	1.88	1.75	MK 597	5/8-11 x 5	225	16.9
		1184-24-24							5/8-11			-----	---		
1 1/2	2	1183-24-32	4.50	5.25	5.00	3.125	1.437	1.50	.66	2.50	1.75	MK 3503	5/8-11 x 6	225	29.0
		-----							USE PART # 1184-32-24			-----	---		
2	1 1/2	1183-32-24	5.00	5.25	5.00	3.812	1.750	1.94	.78	2.25	2.50	MK 598	3/4-10 x 6	228	31.8
		1184-32-24							3/4-10			-----	---		
2	2	1183-32-32	5.00	5.25	5.00	3.812	1.750	1.94	.78	2.25	2.50	MK 598	3/4-10 x 6	228	31.5
		1184-32-32							3/4-10			-----	---		
2 1/2	2	1183-40-32	6.00	7.00	5.00	4.875	2.312	2.44	.94	2.50	2.50	MK 1596	7/8-9 x 6 1/2	232	49.7
		1184-40-32							7/8-9			-----	---		
2 1/2	2 1/2	1183-40-40	6.00	7.00	6.00	4.875	2.312	2.44	.94	2.75	2.50	MK	7/8-9 x 7 1/2	232	56.6
		1184-40-40							7/8-9			-----	---		
3	3	1183-48-48	7.00	8.50	7.00	6.000	2.812	2.94	1.19	3.25	3.00	MK	1 1/8-7 x 9	237	92.4
		1184-48-48							1 1/8-7			-----	---		

① Order Separately

② 2500 PSI Max

③ 2000 PSI Max

④ 500 PSI Max

⑤ May Contain Lead